

# JD EDWARDS ENTERPRISEONE TOOLS 8.97



JD EDWARDS ENTERPRISEONE

## KEY FEATURES

- Pre-integrated for use with all JD Edwards EnterpriseOne applications (release 8.9 on)
- Designed to lower your total cost of ownership
- Improved usability and end user productivity
- Built with global, open standards for software
- **Service Oriented Architecture**
  - Native business services
  - Expose services for other applications
  - External service call outs
  - Integrated security of access to services
  - Integrated deployment methodology of services
  - Integrated development for new services
- **Reports**
  - Customer facing document creation and distribution
  - Report authoring with popular software
  - Integrated security
  - Multiple output formats
  - Language translation
  - Output bursting
- **System Management**
  - Centralized console management
  - Improved installation and patching
  - Intuitive configuration management
- **Application Performance**
  - Faster grid rendering
  - Fewer server/browser round trips
  - Lower memory consumption on the server

*JD Edwards EnterpriseOne Tools 8.97 delivers innovations, lower ownership costs, and improved usability across the entire suite of JD Edwards EnterpriseOne family of applications. Tools 8.97 lets you do more with extensive support for Service Oriented Architecture, improved reporting based on XML standards, central system management for your entire system and faster performance for client browsers.*

### **The Issue: Support More Business Needs While Lowering System Costs**

ERP customers need to simplify their system management, streamline enterprise application integration, and continually improve their end users' productivity. Operations needs new and expanded capabilities to support daily activities across your business yet financial pressures require better system management to lower ownership costs across your enterprise. It is the universal IT dilemma – everyday you are asked to deliver more with less; it is all about increasing your productivity while adding more to the overall bottom line.

### **The Solution: Better Tooling for Lower Ownership Cost and Higher Return**

Oracle's JD Edwards EnterpriseOne Tools helps you address the paradox of doing more with less with a continually evolving and increasingly comprehensive technology platform. The JD Edwards EnterpriseOne Tools 8.97 release continues this evolution by providing you with deep support for Service Oriented Architecture (SOA) across JD Edwards EnterpriseOne, better reporting tooling through Oracle's XML based reporting tool, a comprehensive JD Edwards EnterpriseOne system management console, and improved usability and performance of the browser based client. These items add up to lowering your ownership cost and maximizes your return on your ERP system investment – and adding more to your bottom line.

### **Deep Support for Service Oriented Architecture (SOA)**

As organizations embrace SOA-based architecture, the ability to easily produce and consume business services – preferably in the industry standard form of web services – becomes more important. With JD Edwards EnterpriseOne Tools 8.97 you get a comprehensive business services set of tools; these are the foundation of JD Edwards EnterpriseOne business services along with partner and customer application integration projects. This lets customers extend the functionality of their JD Edwards EnterpriseOne product through standards-based technology and therefore fully capitalize on the benefits of Service Oriented Architecture (SOA). This technology also modernizes how JD Edwards EnterpriseOne will deliver integration to other products in the Oracle application family.

These new business services capabilities are an integral part of the JD Edwards

EnterpriseOne application, rather than traditional bolt-on technology. The many benefits include:

- **Integrated System Management** – Use the JD Edwards EnterpriseOne Server Manager tool to install and manage the business services server.
- **Integrated Development Environment** – The same Object Management Workbench (OMW) is used to manage business services, in conjunction with Oracle’s jDeveloper development tool.
- **Integrated Security** – Security is enforced consistently with other JD Edwards EnterpriseOne security types.
- **Integrated Lifecycle Management** – Change management is consistent with the embedded JD Edwards EnterpriseOne deployment methodology.

### Better Native JD Edwards EnterpriseOne Reporting

JD Edwards EnterpriseOne is your system of record for critical business information which you use to run your business. This information must be secure and yet accessible to a wide variety of users, including employees, partners and customers.

JD Edwards EnterpriseOne Tools 8.97 significantly improves the embedded reporting tooling for JD Edwards EnterpriseOne. By leveraging XML Publisher, a standards-based technology from Oracle (called “Oracle BI Publisher” when purchased as a standalone Oracle product), the creation of reports is simplified and the delivering to users is improved.

With this release, a popular report formatting and layout tool such as Microsoft Word is used to author the reports based upon an XML formatted data extract. These new reports can include rich text formatting, charting, conditional formatting, and other more advanced reporting capabilities. As an integral part of JD Edwards EnterpriseOne Tools, all access is both familiar and secure.

This permits easy and secure access to JD Edwards EnterpriseOne information along with better report output. Other benefits include:

- Customer facing, pixel-perfect document creation
- Document distribution by email or print
- Output to Adobe PDF, RTF, XML, Microsoft Excel, Microsoft PowerPoint, eText
- Bursting
- Mechanism for creating language specific versions of reports (See Figure 1)

### Comprehensive JD Edwards EnterpriseOne System Management

JD Edwards EnterpriseOne Tools 8.97 introduces Server Manager for the monitoring and management of your JD Edwards EnterpriseOne servers. Rather than having several different tools to install, configure, monitor, and troubleshoot JD Edwards EnterpriseOne servers, Tools 8.97 lets you do this from one secure, centralized system administrator console. Server Manager simplifies the system management by increasing your visibility into system operation and bringing consistency to the system management activities

across the JD Edwards EnterpriseOne server environment: Lifecycle Management, Configuration Management and Application Performance Management

- **Lifecycle Management** – From a central console, you remotely install and patch all of the JD Edwards EnterpriseOne server types including the enterprise logic server, batch server, application server (JAS), portal server, business services server, and other server types.
- **Configuration Management** – A structured, web based tool helps ensure you are configuring these servers for your anticipated usage. Any configuration changes are audited and tools are available to compare configuration across different servers.
- **Application Performance Management** – Monitor server status, system activity, and access logs for system troubleshooting. Set up alerts to proactively notify you of potential system issues.

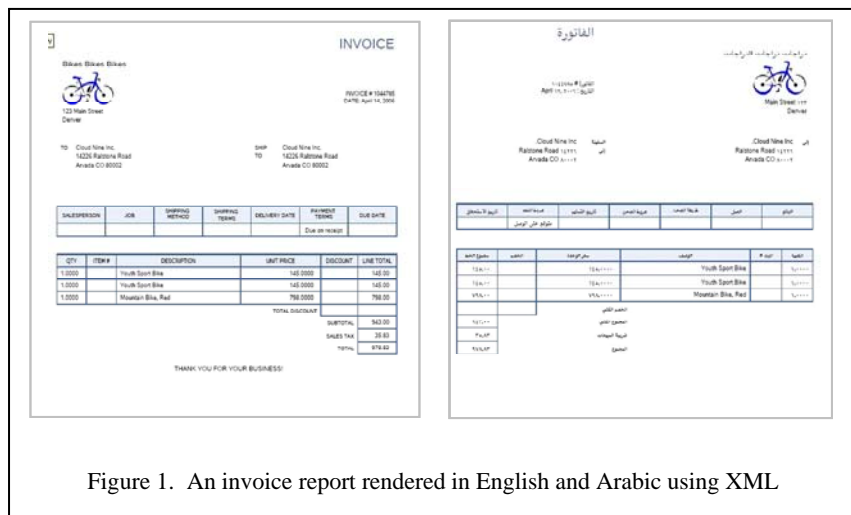


Figure 1. An invoice report rendered in English and Arabic using XML

### Improved Usability and Performance of Browser Based Client

The JD Edwards EnterpriseOne browser based client is the primary user interface for access to EnterpriseOne applications. It is a functionally rich, highly interactive client which leverages standards based technologies.

JD Edwards EnterpriseOne Tools 8.97 continues to deliver usability and performance improvements to users of the client – resulting in more productive and happy users of JD Edwards EnterpriseOne applications.

- **Faster Grid Refresh and Display** – For many users, interaction with JD Edwards EnterpriseOne applications is spent in the grid – the tabular rows and columns of information. The grid is where details of a transaction, such as line items in sales order are entered, edited and reviewed. In Tools 8.97 the time to display or refresh the contents of the grid has been improved dramatically. This improves your users’ productivity since it is common for users to bring up large sets of data in grids and scroll through the data frequently.
- **Fewer Server/Desktop Roundtrips** – Tools 8.97 reduces “round trips” between your users’ browsers and the system server; your users will experience better

performance which will increase overall user productivity. For example, Tools 8.97 reduces the number of round trips:

- From 3 to 1 for launching applications
- From 5 to 2 for closing down an application

This is especially important for users connecting through a high latency network connection such as a Wide Area Network.

- **Smarter Server Side Processing and More Efficient Memory Management** – Internet architectures requires less processing power on client machines and more so on your system server so with JD Edwards EnterpriseOne Tools 8.97 the server side processing has been improved in the areas of memory caching, handling of large file exports and use of the overall file system. This gives you a more scalable server.

### Additional Feature/Function Highlights

In addition to those items noted above, the JD Edwards EnterpriseOne Tools 8.97 release delivers these additional benefits:

- Support for Oracle Database 11g
- Improved developer productivity
- Faster download of the JD Edwards EnterpriseOne menu
- Improved usability of the JD Edwards EnterpriseOne menu
- Support for Microsoft Vista for Win32 (8.9, 8.10 only), administration, and development clients
- Firefox 2.0 support for Windows, Mac, and Linux based clients
- Better fault tolerance
- Spell checking on the browser client

### Solution Integration to JD Edwards EnterpriseOne Applications

Oracle offers two open-standards based software infrastructures that your company needs to run any JD Edwards EnterpriseOne solutions:

- Oracle Technology Foundation (Red Stack)
- IBM Technology Foundation (Blue Stack)

These integrated, open standards software packages are pre-integrated with JD Edwards EnterpriseOne applications and designed to lower your total cost of ownership, simplifying both implementation and support, and enhancing ease of use.

Copyright 2007 Oracle. All Rights Reserved.

This document is provided for information purposes only, and the contents hereof are subject to change without notice. This document is not warranted to be error-free, nor is it subject to any other warranties or conditions, whether expressed orally or implied in law, including implied warranties and conditions of merchantability or fitness for a particular purpose. We specifically disclaim any liability with respect to this document, and no contractual obligations are formed either directly or indirectly by this document. This document may not be reproduced or transmitted in any form or by any means, electronic or mechanical, for any purpose, without our prior written permission.

Oracle, JD Edwards, and PeopleSoft are registered trademarks of Oracle Corporation and/or its affiliates. Other names may be trademarks of their respective owners. (Revised October 11, 2007 REL)